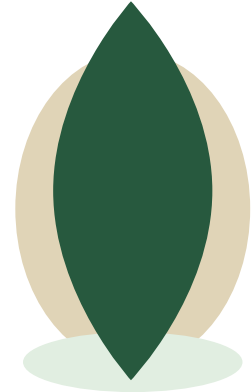


2020

ANNUAL REPORT



SANTA FE TEN
MEMORIAL FOUNDATION
"We Come Here to Remember"



BOARD OF DIRECTORS

FAMILY DIRECTORS

SHANNAN CLAUSSEN
Christian Riley
Garcia's Mother

GAIL MCLEOD
Kyle McLeod's Mother

ROSIE STONE
Fundraising Officer
Chris Stone's Mother

ROBIN TREAT
Angelique Ramirez's
Mother

COMMUNITY DIRECTORS

MEGAN GROVE
Chair
Faculty Associate

CAROLYN ADAMS
Secretary
Retired Teacher

CAROL GAYLORD
Treasurer
Director, City of Santa Fe
Resiliency Center

SCHOOL DIRECTORS

JARED FAUST
Teacher and Coach

BETH YORLANO
Lead Counselor

FAMILY MEMBERS

SADIE BAZE
Shana Fisher's Mother

DJ CLAUSSEN
Christian Riley
Garcia's Father

JOLEEN COGBURN
Sabika Sheikh's
Host Mother

STEVE PERKINS
Ann Perkin's Husband

ANGELICA STONE
Chris Stone's Sister

CHRIS STONE
Chris Stone's Father

MERCEDEZ STONE
Chris Stone's Sister

JENNIFER TISDALE
Cynthia Tisdale's
Daughter-In-Law

COMMUNITY MEMBERS

NICOLE HARRIS
Teacher

SCHOOL MEMBERS

STEVE ROSE
Teacher

LENA CASTRO
Teacher

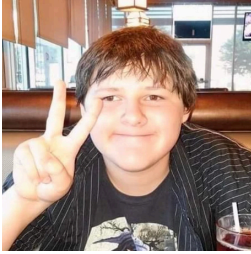
TABLE OF CONTENTS

HONORING THE TEN	3
LETTER FROM THE BOARD	4
THE FOUNDATION	5
THE FOUNDERS	6
THE SANTA FE TEN MEMORIAL	7-14
THE OVERALL SITE PLAN	9
THE MEDITATIVE GROVE	10-11
THE GATEWAY	12
THE SACRED SPACE	13
THE CENTER STONE	14
THE FUTURE	15

We are grateful for the support of numerous members and volunteers from the district and community at large that assist the foundation.

HONORING THE TEN

"My hope is our memorial allows visitors to see and feel how incredibly loved, special, one of a kind, and amazing each one of our angels were while they were here with us." -- Robin Treat, Angelique Ramirez's mother



**Jared
Conard Black**
Student | 17



**Angelique
Ramirez**
Student | 15



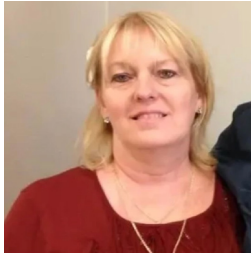
**Christian
Riley Garcia**
Student | 15



**Shana
Fisher**
Student | 16



**Kyle
McLeod**
Student | 15



**Cynthia
Tisdale**
Teacher | 63



**Chris
Stone**
Student | 17



**Sabika
Sheikh**
Student | 17



**Ann
Perkins**
Teacher | 64

**Our mission is to design
and build a memorial
that remembers and
honors those who died,
and all individuals
impacted on May 18,
2018 in the Santa Fe
High School shooting.**

LETTER FROM THE BOARD

Within nine months of incorporation as a nonprofit, the Santa Fe Ten Memorial Foundation completed the concept design of the future Memorial where we hope visitors from across the nation will come to reflect and REMEMBER those we lost on May 18, 2018. The design process required thousands of hours of thought, CARE and planning as the Memorial is deeply personal to the Family Directors that serve on our board and individuals from the community and school district that were friends, classmates, coaches, teachers, or colleagues of the TEN. Although a challenging process, our focus never wavered in our core mission to HONOR the Ten.

The Memorial will stand in the HEART of Santa Fe on sacred ground where the families, survivors and community come together in interwoven, infinite loops symbolizing the everlasting LEGACY and LOVE of the Ten. We are deeply grateful for the University of Houston Law Center's Entrepreneurship and Community Development Clinic (ECDC), the University of Houston Gerald D. Hines College of Architecture and Design Build Studio, and Jones Day for contributing their time and expertise to help make our vision one step closer to reality.

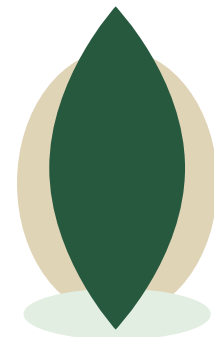
Although great progress has been made, there is still much work to be done. The development of the Memorial will not be possible without engagement from the community as we partner with the families, individuals, businesses, and organizations to pursue our mission of building a lasting TRIBUTE unlike any other Memorial in existence.

We thank you in advance for your generosity as we continue to find solace and support one another through COMPASSION and solidarity. These prove, time and time again, human dignity will always triumph over human depravity. As will be etched in the center stone of the Memorial, we are "Defined not by a day, but instead by the strength within us."

Respectfully,



Megan L. Grove, Chair
On behalf of the Santa Fe Ten
Memorial Foundation Board of Directors



SANTA FE TEN
MEMORIAL FOUNDATION
"We Come Here to Remember"

THE FOUNDATION

FISCAL YEAR FINANCIAL REPORT (11/15/19 - 6/30/20)

Income \$5,885
Expenses \$1,068
Balance \$4,817

**The Santa Fe
Ten Memorial
Foundation
was granted
501(c)(3)
charitable
status
(11/15/19)**

**The final
concept
memorial
design was
approved by
the Santa Fe
Ten Memorial
Foundation
Board of
Directors
(3/19/20)**

**The Santa Fe
Independent
School
District Board
of Trustees
approved
the proposed
memorial
and location
pending an
agreement
(6/15/20)**

THE FOUNDERS

THANK YOU TO THE DONORS THAT CONTRIBUTED MONETARY AND IN-KIND GIFTS IN SUPPORT OF THE SANTA FE TEN MEMORIAL

\$50,000+ Level

- University of Houston Gerald D. Hines College of Architecture and Design*

\$25,000 - \$49,999 Level

\$10,000 - \$24,999 Level

- Jones Day*
- University of Houston Law Center's Entrepreneurship and Community Development Clinic (ECDC) | Director Christopher Heard, students Camilo Godoy and Erika Medina*

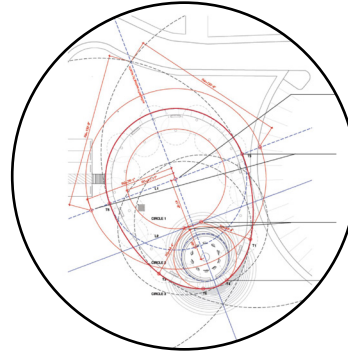
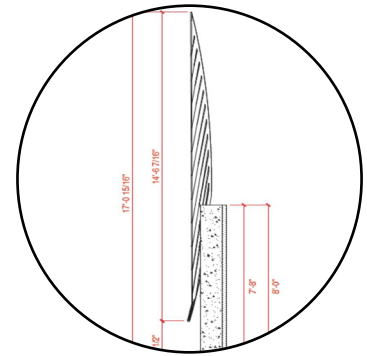
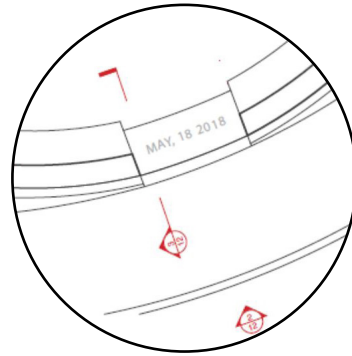
\$1,000 - \$9,999 Level

- Eye Appeal Design | Brenda Holley*
- Executive Board of the Santa Fe Texas Education Foundation
- Marisel Meljen | In loving memory of her daughter - Angelica Meljen
- The Green Tree Fund | Nancy Allen

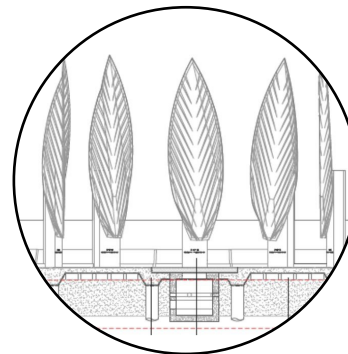
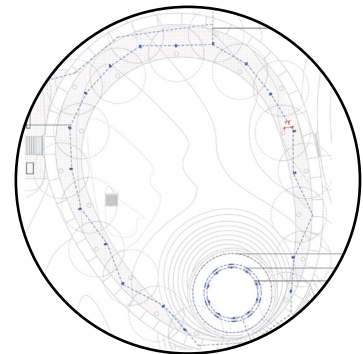
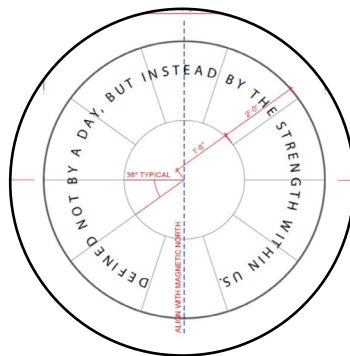
\$1 - \$999 Level

- | | | |
|-------------------------------|---------------------|------------------------------|
| - Anonymous | - Cindy Ewing | - Lindsey Neice |
| - Kelly Smith Adams | - Wendy Frazier | - Charles Neiman |
| - Dee Dee Baker | - Jay Garcia | - Terry Calaway Noack |
| - Kimberly Bassett | - Carol Gaylord | - Barbara Ottwork Richardson |
| - Patricia Bouquet | - Cindy Lang Gill | - Kimberly Brouillard Ross |
| - Margaret Botter Bowling | - Megan Grove | - Melis Araujo Sausser |
| - Molly Bray | - Leticia Hardin | - Shannon Lanterman Shulze |
| - Cristena Bullard | - J Harding & Co. | - Sheri Shubert |
| - John Castillo | - Nicole Hilliard | - Angie Austin Smothermon |
| - Melodie and Donald Claussen | - Christopher Knapp | - Buck Stevens |
| - Candice Crist | - Elisa Diane Long | - Elizabeth Tenbrook |
| - Jane R. Davis | - Tori McElroy | - Robin Treat |
| - Cindy DeWitt | - Karen See Mooney | - Charles Walker |
| - Bonnie Elizabeth | - Cory Myers | - Michelle Walker |
| | | - Elizabeth Yorlano |

* denotes in-kind value



THE SANTA FE TEN MEMORIAL



UNIVERSITY of HOUSTON

GERALD D. HINES COLLEGE of ARCHITECTURE and DESIGN



IN ORDER FROM LEFT TO RIGHT: Jason Logan (Adjunct Professor and Principal, LOJO Architecture), Brian Liu, Tiffany Thai, Pear Siriko, Montse Bribiesca, Vanessa Beckett, Josh Rodriguez, Courtney Warren Williams, Hannah Hemmer, Patrick Peters (Professor of Graduate Design/Build Studio and LEED AP Architect)

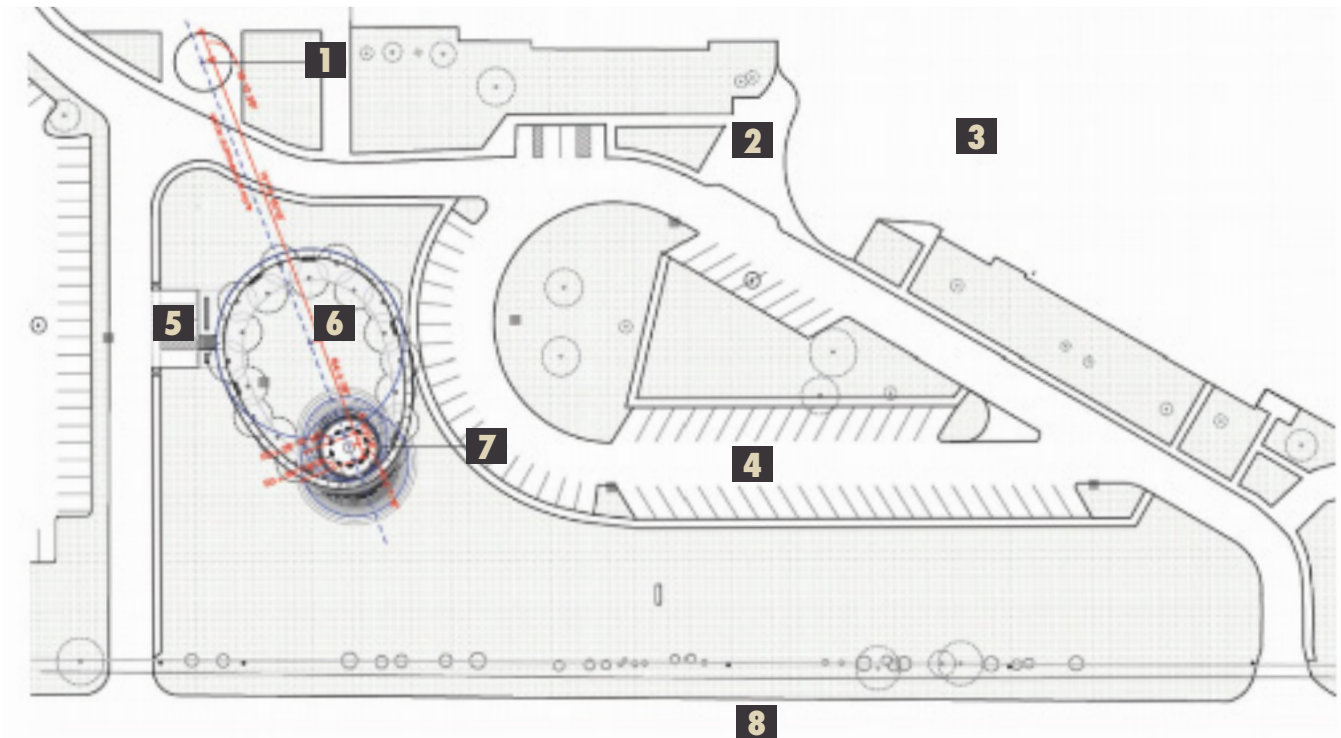
THANK YOU TO THE UH FACULTY AND STUDENTS FOR HELPING COMMEMORATE THE LIVES OF THOSE WE LOST BY CONCEPTUALIZING SUCH A THOUGHTFUL AND INSPIRATIONAL MEMORIAL.

READ OUR STORY [HONORING THE SANTA FE TEN](#)

THE OVERALL SITE PLAN

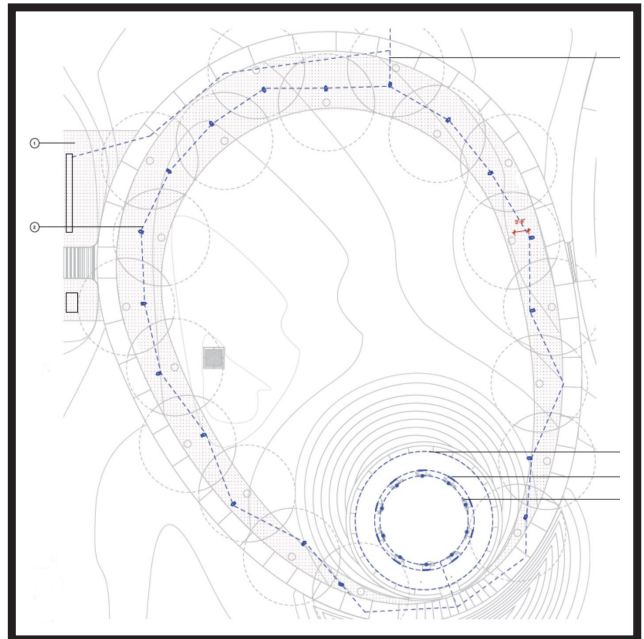
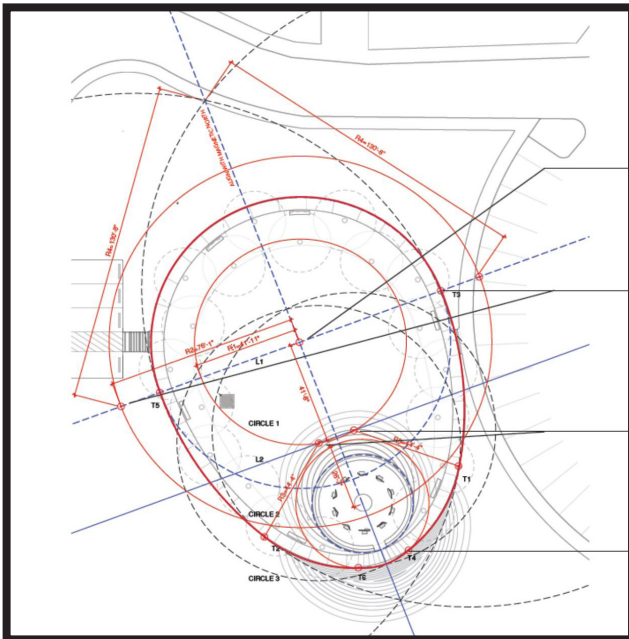


After the tragedy, families, friends, survivors, citizens of Santa Fe, neighboring community members and all individuals impacted needed a thoughtful and respectful space for reflection. The journey of each visitor's collective healing, remembrance and resiliency is captured in the overall plan of the Santa Fe Ten Memorial, which is intended to be built on sacred ground and visible from Highway 6.



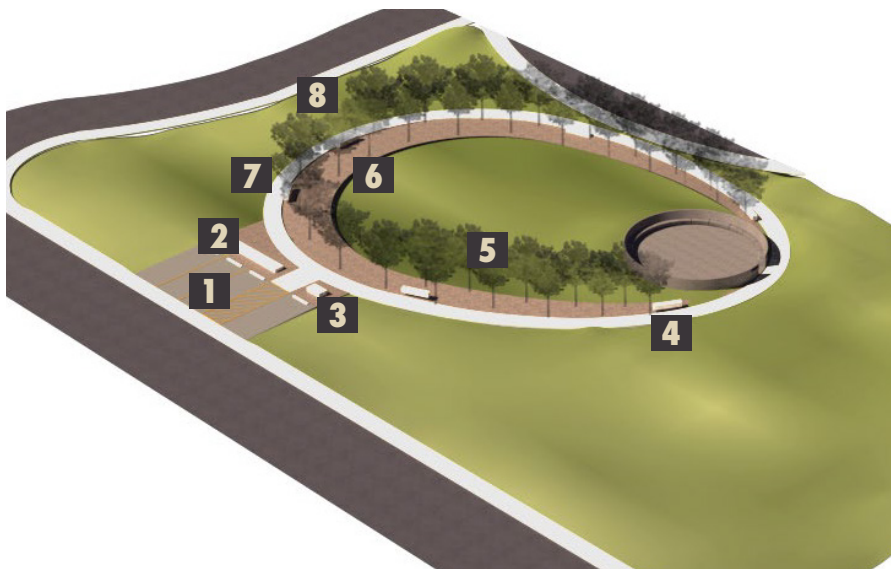
- | | |
|--------------------------------|----------------------------|
| 1. WARRIOR STATUE | 5. VISITOR PARKING |
| 2. SCHOOL ENTRANCE | 6. MEDITATIVE GROVE |
| 3. SANTA FE HIGH SCHOOL | 7. SACRED SPACE |
| 4. STUDENT PARKING | 8. HIGHWAY 6 |

THE MEDITATIVE GROVE



**Geometrical Plan
Sacred Infinity Loops**

**Lighting Plan
Endless Path**



- 1. PARKING LOT**
- 2. IDENTITY BENCH**
- 3. DONOR BENCH**
- 4. MEDITATIVE BENCHES**
- 5. TREES**
- 6. GRAVEL PATH**
- 7. PAVED PATH**
- 8. SFHS STUDENT PIECE (TBD)**

THE MEDITATIVE GROVE



The entrance to the memorial from the community parking lot will be marked by the identity bench on the left and donor bench on the right. A second entrance will be connected to the teardrop parking lot.

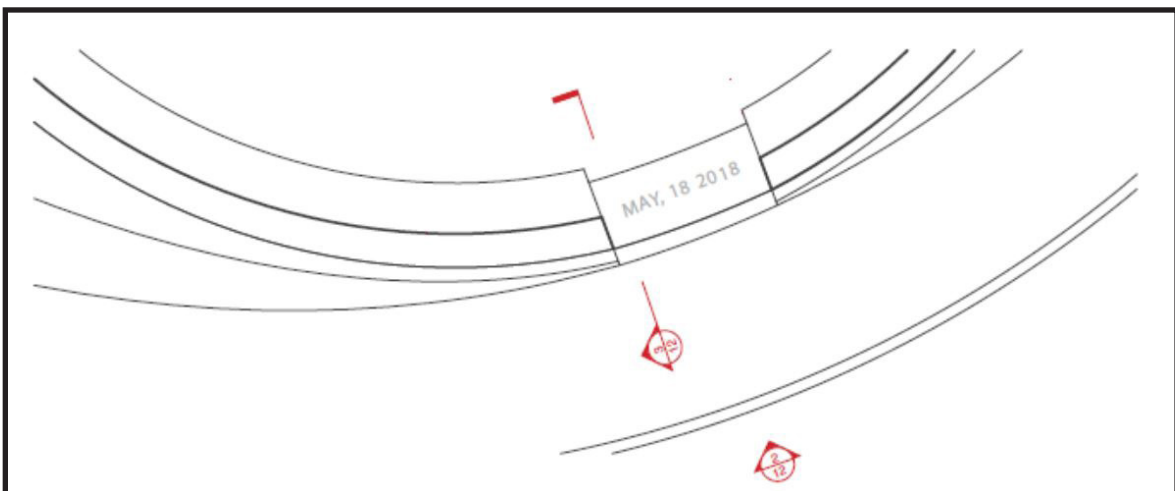
One first enters the memorial through the Meditative Grove. The never ending loop allows one to enter the space intended for reflection, introspection, and to prepare oneself for entrance into the Sacred Space. Here, both the survivors and community come together in interwoven infinite loops that symbolize the everlasting legacy and spirit of the Ten.



THE GATEWAY



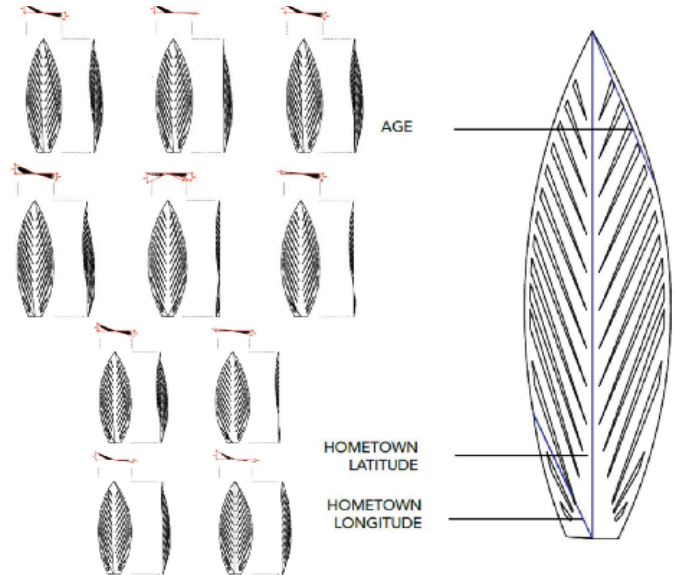
When you are ready to visit the Sacred Space, the path begins to narrow. Along the right of the wall, you read the dedication and the left will be inscribed with "We Come Here To Remember." The break in the retaining wall marks the entrance. At this threshold, the date "May 18, 2018" is carved in stone, laid in the ground.



THE SACRED SPACE

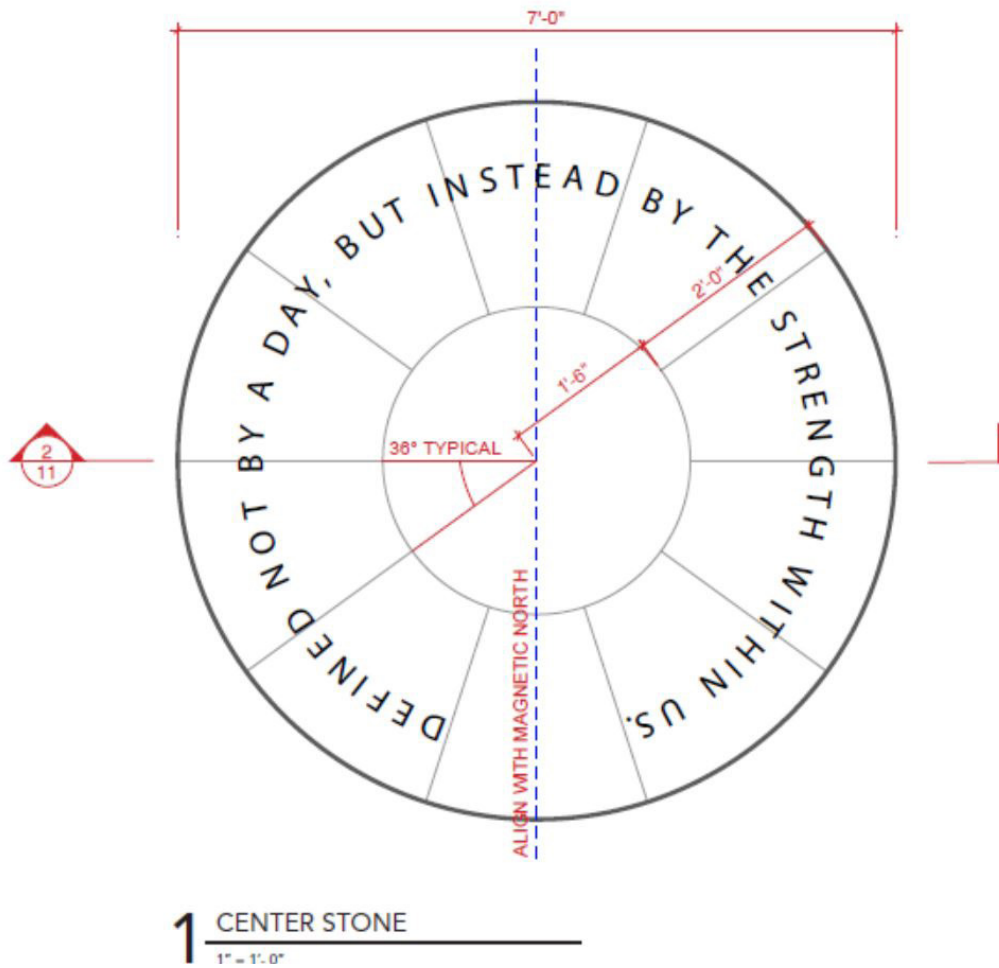


Ten monuments honor each individual lost and create a central void which can never be filled. As you travel through the space at your own pace, you will come to know the Ten that live on in the hearts of many.



Each of the Ten's monuments is adorned with personal memories from the families so that visitors will know more about each individual's life and how they impacted others with their kindness, compassion, and courage. Each concrete monolith holds a uniquely shaped feather for each individual, which will be folded by the age and birthplace or hometown coordinates (in degrees latitude and longitude) creating a monument unlike any other.

THE CENTER STONE



The inspirational phrase "Defined not by a day, but instead by the strength within us," was selected from more than 50 submissions and will be incorporated into the center stone of the Santa Fe Ten Memorial.

THE FUTURE

“FOR US LEFT OUR WORK IS NOT DONE.”

SHANNAN CLAUSSEN, CHRISTIAN RILEY GARCIA’S MOTHER

\$1.2 M



DURING OUR FIRST FISCAL YEAR, WE RAISED ABOUT \$5,000 TOWARDS THE CONSTRUCTION OF THE MEMORIAL. HELP US REACH OUR GOAL OF \$1.2 MILLION.

FUTURE COMMUNITY ENGAGEMENT OPPORTUNITIES

THE UNFILLABLE CHAIR



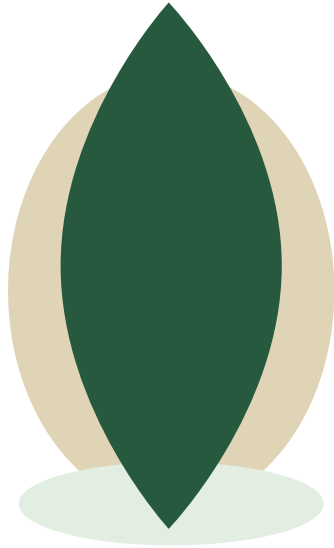
THIS PIECE WILL BE DESIGNED BY CURRENT AND FORMER STUDENTS FROM SANTA FE HIGH SCHOOL IN MEMORY OF THEIR CLASSMATES AND TEACHERS.

IN THE EXPERIENCE OF LOSING A LOVED ONE, THERE BECOMES A VOID IN OUR LIVES. WHETHER IT IS AT SCHOOL, AT THE DINING TABLE, OR AT A FAMILY GATHERING, IT IS EVIDENT THERE IS AN EMPTY SPACE. A VOID THAT CAN NEVER BE FILLED. A PLACE WHERE NO ONE ELSE CAN SIT.

PRECEDENT DESIGN: OKLAHOMA CITY NATIONAL MEMORIAL & MUSEUM
FIELD OF EMPTY CHAIRS

THE WARRIOR STATUE

A WARRIOR STATUE WILL BE DESIGNED AND CRAFTED BY A LOCAL ARTIST. INTERESTED ARTISTS SHOULD CONTACT THE FOUNDATION AND SUBMIT A PROPOSAL.



SANTA FE TEN

MEMORIAL FOUNDATION

“We Come Here to Remember”

GET IN TOUCH

EMAIL

sftenmemorialfoundation@gmail.com

ADDRESS

Santa Fe Ten Memorial Foundation
P.O. Box 919, Santa Fe, TX 77510

WEBSITE

www.sftenmemorial.org

SOCIAL MEDIA

Facebook: [@SFTenMemorial](https://www.facebook.com/SFTenMemorial)

Instagram: [@sftenmemorial](https://www.instagram.com/sftenmemorial)

Twitter: [@SFTenMemorial](https://twitter.com/SFTenMemorial)